

Open House

September 30, 2021



**BEE IS  
A SUPERHERO!**

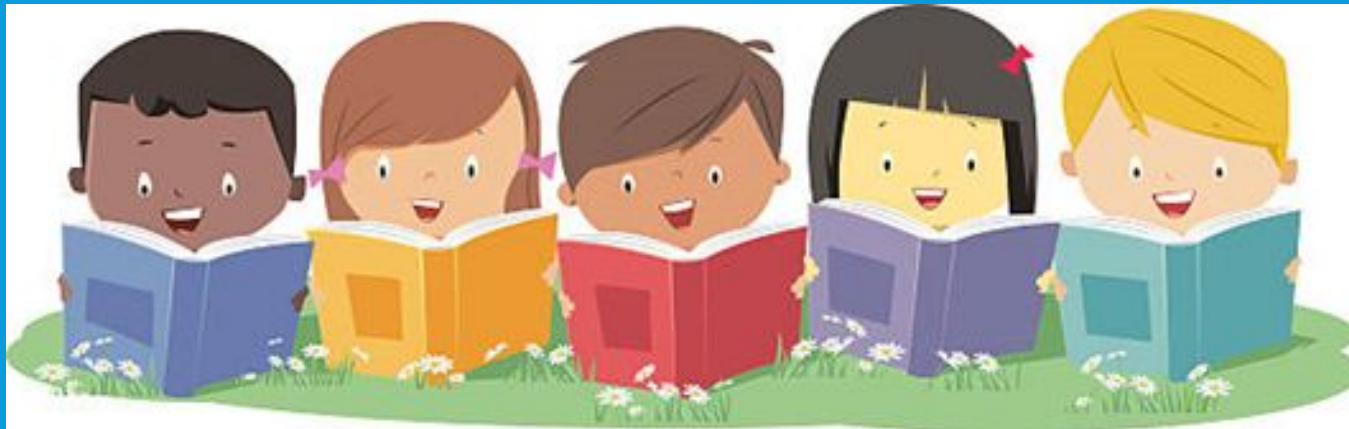
Our mission this year is  
**STUDENT SUCCESS!**

# WELCOME TO OUR CLASS!

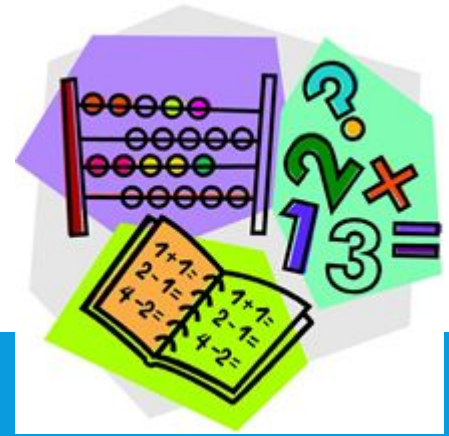
I am so excited to have your children in my class. They are a great bunch of kids. Each of them are working very hard daily to meet our goals and expectations. I can't wait to see how much they grow this year!

# ELA CURRICULUM

- Focus on literary & informational texts*
- Building reading skills through*
  - Independent reading time (IRLA time)
  - Goals for improving phonics, fluency, & comprehension



# MATH CURRICULUM



- Follows the **Louisiana State Student Standards**
- Features **end of the year** math goals for each grade level
- Use **research-based math strategies** that have been proven to increase student achievement in math.
  - *number bonds, tape diagrams, vertical number lines, etc...*
- Necessary for students to master the standards and perform well on state standardized testing

# SOCIAL STUDIES CURRICULUM



- Follow the LA Student Standards
- Shift in SS from memorizing dates, names and places to reading and responding to text using literacy strategies taught in ELA.
- Students are also learning how to source documents such as pictures, artifacts and maps to gain knowledge and information.

# SCIENCE CURRICULUM

- Follow the LA Science Standards
- Hands-on, inquiry based learning





# HANDBOOK HIGHLIGHTS

District Handbook can be found at [stpsb.org](http://stpsb.org)

Parents Tab



# ATTENDANCE

- If your child is absent for any reason, a note from you or from a doctor must be presented and checked by the office so that the absence can be excused.
- The note must include
  - child's first and last name
  - date of the absence
  - reason for the absence – Please be as specific as possible.
- If a note is not received within 2 days after the absence, the absence will be recorded as unexcused.
- Please use Student Progress Center to check attendance. If you need access, please call the front office.



# UNIFORMS



## ▪ SHIRTS

- BEE spirit shirt (red or navy) can be worn any day of the week.
- Red or white polo style **with collar and buttons**, not a T-shirt.
- The only acceptable logo on the shirt is the Superstar. No other logos, emblems, or monograms allowed.
- Undershirts must be tucked in and not visible below the hem of the shirt or sleeve.
- Any other BEE t-shirt (Fun Run, club shirts) can be worn on Fridays, unless directed by a specific club sponsor.

## ▪ BOTTOMS

- Bottoms must be navy blue. (shorts, pants, skorts, skirts, capris, etc. )
- Leggings or jeggings or tight fitting pants can only be worn under skirts or shorts.
- Jeans, wind pants, & mesh basketball shorts are not allowed.

## ▪ MASKS

- Face coverings (K-6, students above 5yrs. old) are required at all times on campus and must cover the nose and chin. Neck gaiters are not an approved face covering.

# GROOMING

- All students:
  - Hair must be clean and not unusually colored.
  - Pictures, symbols, letters, numbers, etc. will not be permitted.

# STUDENT ELECTRONIC COMMUNICATION (WIRELESS DEVICES) POLICY

- “Wireless devices” includes, but is not limited to, cellular phones (whether analog or digital), camera phones, beepers, pagers, text messaging devices and PDA's that are used as telecommunication devices or to transmit text messages, as well as any other wireless electronic telecommunication devices.
- Students **shall be allowed** to possess a telecommunication device (cell phone) on a school campus during the **instructional day** or on the **bus** to and from school provided the device is turned to the **off position, completely stowed away, and not in use.**
- **Used only in emergency situations.** Emergency shall mean an actual or imminent threat to public health or safety which may result in loss of life or injury.
- The School System will not be responsible for lost or stolen electronic devices.



OTHER ANNOUNCEMENTS

# PARENT INVOLVEMENT OPPORTUNITIES

- At this time, only essential personnel are permitted on any STPPS campus
- PTA Facebook
- November – We are celebrating our Military & Veterans with a Wall of Heroes. Please send in a photo of your hero to display by November 1st. A picture of our wall will be displayed on our school website.
- Papa Johns Restaurant Night – Wednesday, September 15, please mention BEE!
- We are currently looking to hire café monitors! Please contact the front office if you are interested in applying.



# SCHOOL FUNDRAISER

- Please consider participating in our school's annual fundraiser! Proceeds this year will go towards much needed playground equipment. We are looking forward to updating and improving our playgrounds for student engagement!
- Sale ends September 14<sup>th</sup> !



## Bonne Ecole Elementary *Fall Fundraiser 2021*

*Every dollar we raise is important to every student in our school community!*

### *When:*

**Sale begins today! Start taking orders.**

**Sale Ends: Tuesday, September 14th.**

*You will be notified when the products will be delivered to our school.*

### *Why:*

The funds generated from this fundraising effort will allow our school to purchase much needed playground equipment.

### *What:*

See the brochure(s) enclosed in this envelope, along with the order form. Be sure and look for the Special "Thank You" incentives for your child.

### *How to get started- 4 easy steps*

1. Start taking orders today! Collect money when orders are taken. Do Not Collect Sales Tax.
2. Put your student's name, teacher's name on all order forms and the back side of this envelope.
3. **Return to school in this envelope the exact cash or check(s) made payable to: Bonne Ecole Elementary.**
4. **Who to Contact:** Family, friends, co-workers, church members, and neighbors that you know.

**Don't forget about social media if available, and only if supervised by an adult.**

**We ask that our students NOT go door to door selling.**

*The safety of our children is our number one priority!*

*Online Shopping - 2 different web sites - over 600 items to choose from!*

Go to: [store.number1fundraising.com](https://store.number1fundraising.com)

- ✓ Click where it says: **REGISTER**
- ✓ Next enter your school: **GROUP ID: F2106.**
- ✓ After you register you will be **given a seller ID number.**
- ✓ E-mail family and friends the Shopping information and Seller ID.



Scan me

**If using method of payment and ship to school option! PLEASE WRITE ON ORDER FORM All Home Delivery OPTION DO NOT write on order form.**

Go to [www.forfundsonline.com](https://www.forfundsonline.com)

- ✓ Click where it says: **REGISTER.**
- ✓ Next enter the school **PROGRAM ID: 65132**
- ✓ After you register, you'll be given a **participant ID number.**
- ✓ E-mail family and friends the Shopping information and participant ID information.



Scan me

Customer will pay shipping, handling and sales tax charges when ordering online if applicable. Customers will have an option to ship to school.

# STUDENT RECOGNITIONS

- Quarterly at Morning Meeting in the Classroom, students will be recognized and given an award to bring home
  - A & A/B Honor Roll
  - Character Awards
  - Superstar of the Month Awards
  - Good News Calls



# PUPIL PROGRESSION PLAN

## ■ 2<sup>nd</sup> & 3<sup>rd</sup> Grades

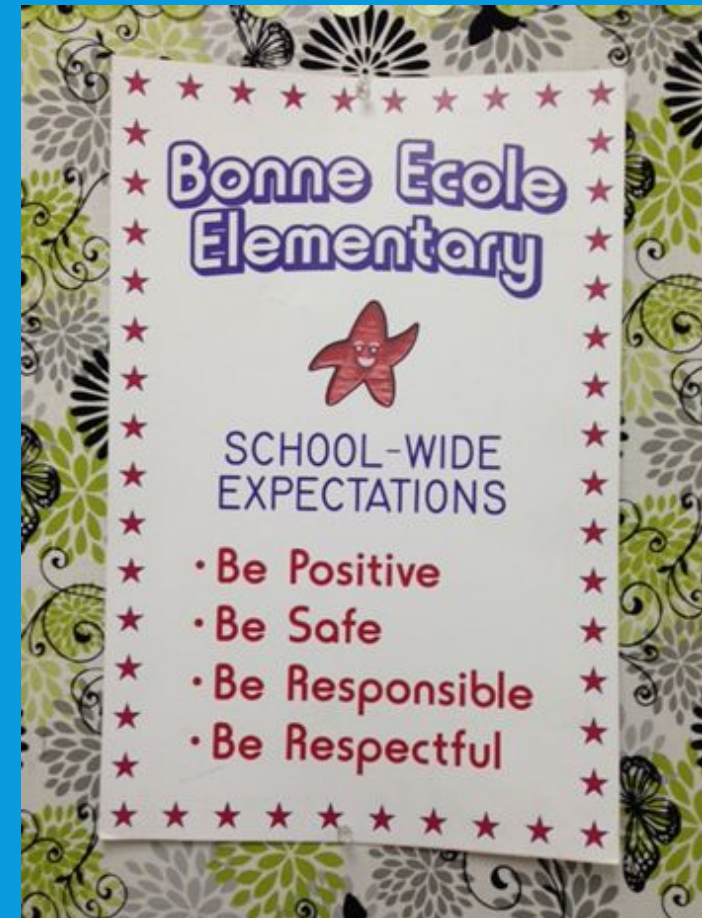
- Subject Area grades in Reading, English Language Arts (ELA), Math, Science, Social Studies
  - Can receive A, B, C, D, F (subject area grades)
- Other grades on report card in Conduct, Work Habits
  - Can receive O, S, N, U
- Promotion – must pass Reading and Math and two of these subjects: ELA, Science, or Social Studies

# SCHOOL SAFETY REMINDERS

- Please call the front office when checking in/out or needing assistance
- **All student check outs must be before 2:45**
- car line = student pick-up and drop off
  - official BEE car line sign needed
  - Contact a secretary to get yours printed.
  - PLEASE DO NOT EXIT THE VEHICLE. Staff will assist students getting in/out of car.
- BEE has a full time Mental Health Provider – Ms. Lauren Brignac.
- BEE has a school resource officer on duty each day.
- BEE is following all district mandated health & safety precautions. Please reference the [2021-2022 Health and Safety Guidelines](#) for more information.

# POSITIVE BEHAVIOR INTERVENTIONS & SUPPORTS (PBIS)

- School Expectations: Be positive, safe, responsible, and respectful!
- Expectations taught across campus.
- Positive rewards include starbucks, special privileges/events, “Superstar Salute” recognition at Morning Meeting, etc.
- White slips are used to inform parents of minor behavior incidents.



# HOMework – PROCEDURES & EXPECTATIONS

Our weekly newsletter can be found in the second sleeve of the green take home folder. The purpose of the newsletter is to keep parents and guardians informed about the skills we are learning that week. Discuss these skills with your child.

Each night you will find homework in the blue take home folder. Homework consists of reading a timed passage (Monday- Thursday), reading and practicing spelling the words on the back of the newsletter and a choice book for 15 minutes (Mon.-Fri.), a few math problems, and completion of incomplete classwork. Incomplete classwork will be marked with HW if it needs to be finished. I tend to shorten the math worksheets by marking problems with HW. Sometimes you will find a study guide to review for an upcoming test. Your child will have homework nightly, but it should not take the entire night to finish. If you feel homework is taking too long, then please contact me.

Behavior charts should be signed nightly. Be sure to look at the back, I will use the back to write notes to you. I give Starbucks for completed homework and signed behavior charts.

# PARENT /TEACHER CONFERENCES

- Problem? Question? Concern?
- All conferences are set up through the office.
- 985-643-0674
- As of now, I am available Wednesdays after school.

# BIRTHDAY TREATS

- Notify the child's teacher in advance and drop them off in the office before the child's lunchtime.
- All treats must be individually wrapped from the manufacturer.

# WEDNESDAY FOLDERS

- Graded papers & school announcements sent home.
- Please sign and return all graded papers to be kept on file at school by Tuesday of the following week. I give Starbucks to students with signed test folders.

# STAY INFORMED!

- JPAMS / Student Progress Center
  - Check your student's grades, attendance, and discipline from your computer or phone.
  - See teacher websites & general homework statement.
  - Link all of your students into one log in.
  - Use log in from last year OR get new PSN code in mail from district
  - Need help? Come to 2<sup>nd</sup> grade hall computer lab TONIGHT!
- Download the STPSB app.
- Check the BEE website and BEE PTA Facebook.



STPPSchools